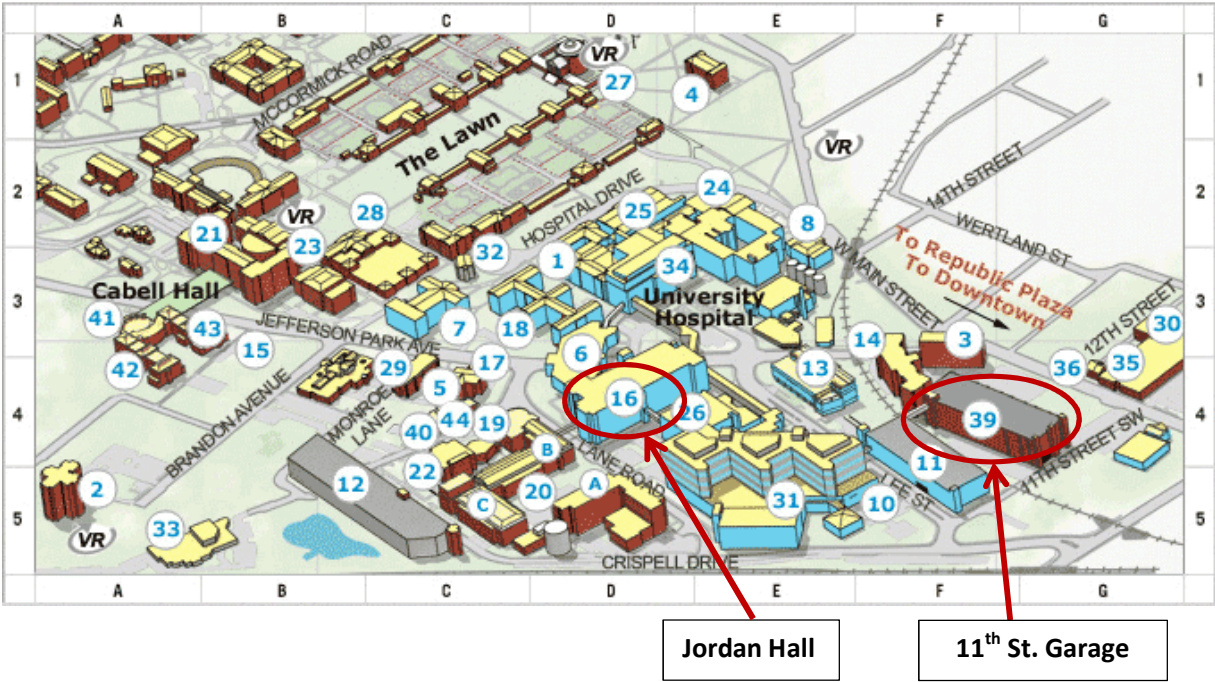


Directions to the Minor lab, Department of Molecular Physiology and Biological Physics @ UVa

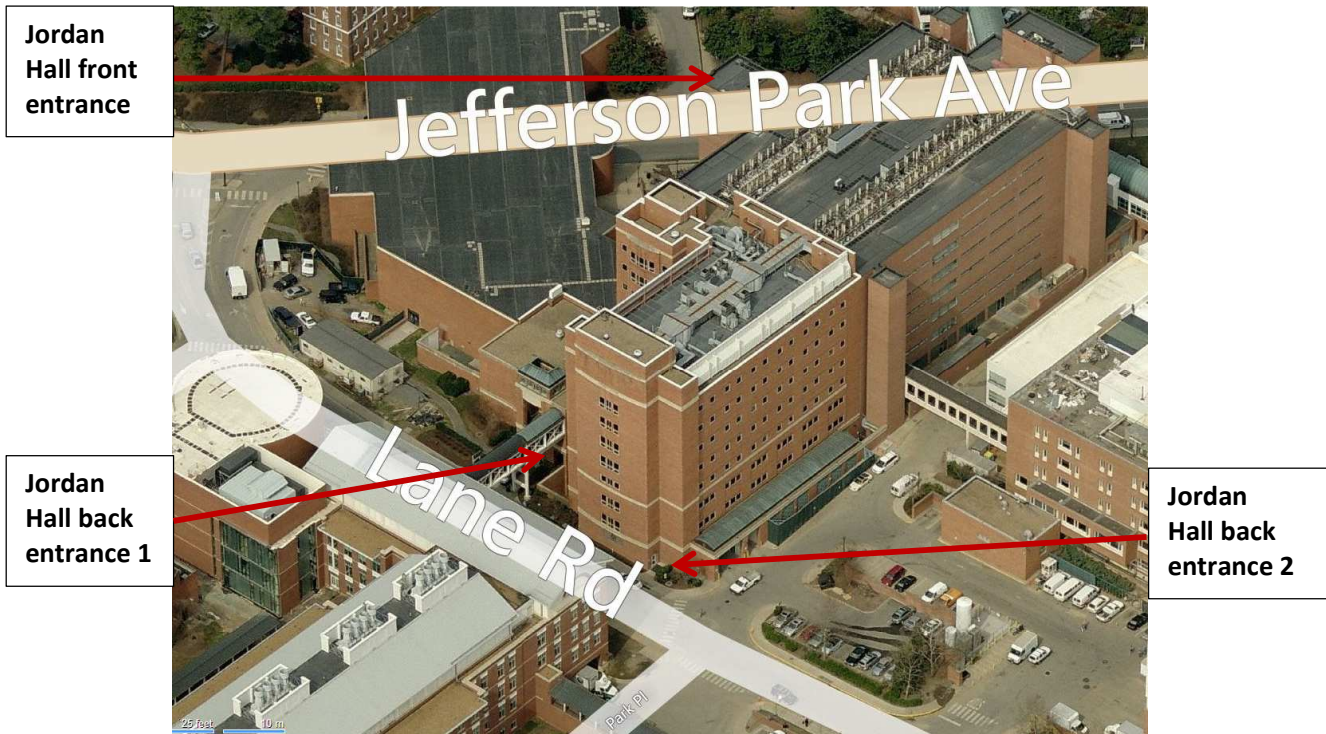
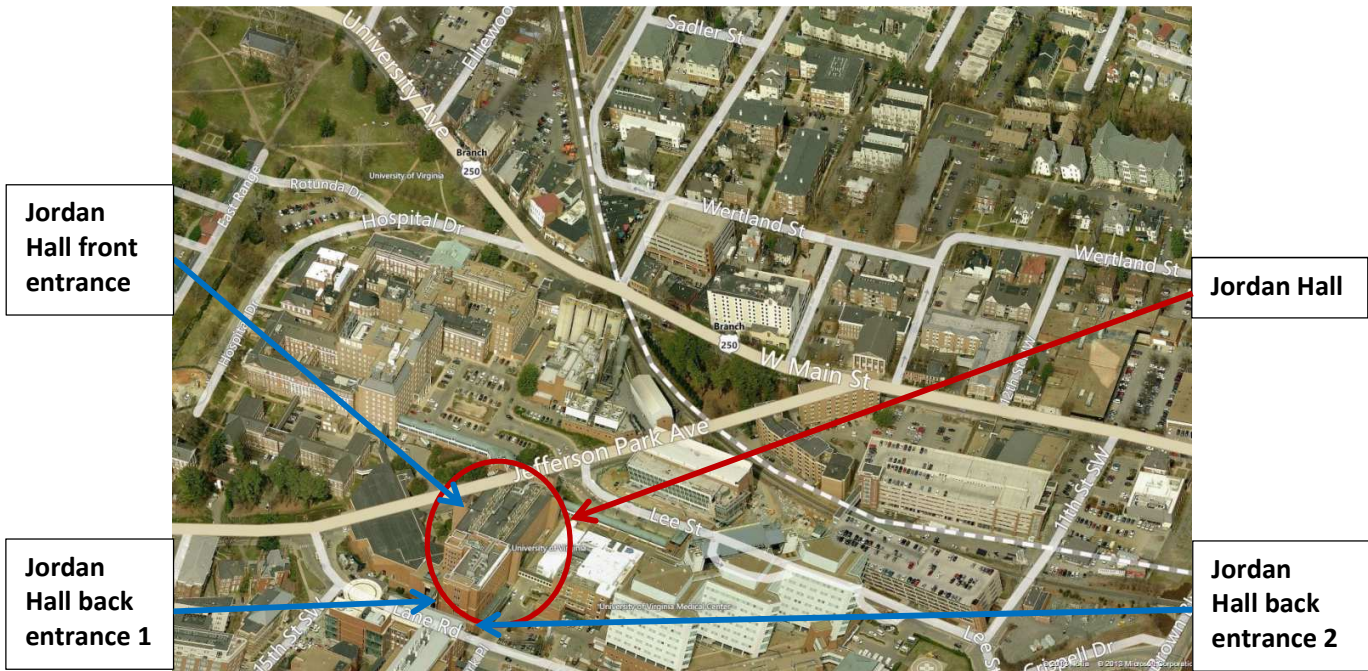
1. The laboratory is part of the University of Virginia Health System (# 40, F4 on the map below)



2. If you are arriving by car, please park in the 11th street garage (#39, F4 on the map below) and bring your ticket with you. Follow the signs in the garage toward the hospital until you come to Lee St, turn right, walk to Jefferson Park Ave (JPA), then turn left. Go to Jordan Hall (#16, D4 on the map below):



- Take either the front entrance from JPA, or one of the two back entrances from Lane Road. Please note that access to the building is restricted before 6am and after 6pm on weekdays and on weekends.



4. (a) If you enter through Jordan Hall back entrance 1, keep going to the end of the Hallway and take the elevator 1 to the 4th floor.
(b) If you enter through Jordan Hall back entrance 2, Take elevator 2 to the 4th floor.

5. Take the dotted route to the Minor lab. Wladek's office (4223A) is located inside Room 4223. If you parked in the 11th street garage, we make sure your ticket is validated before you depart.

